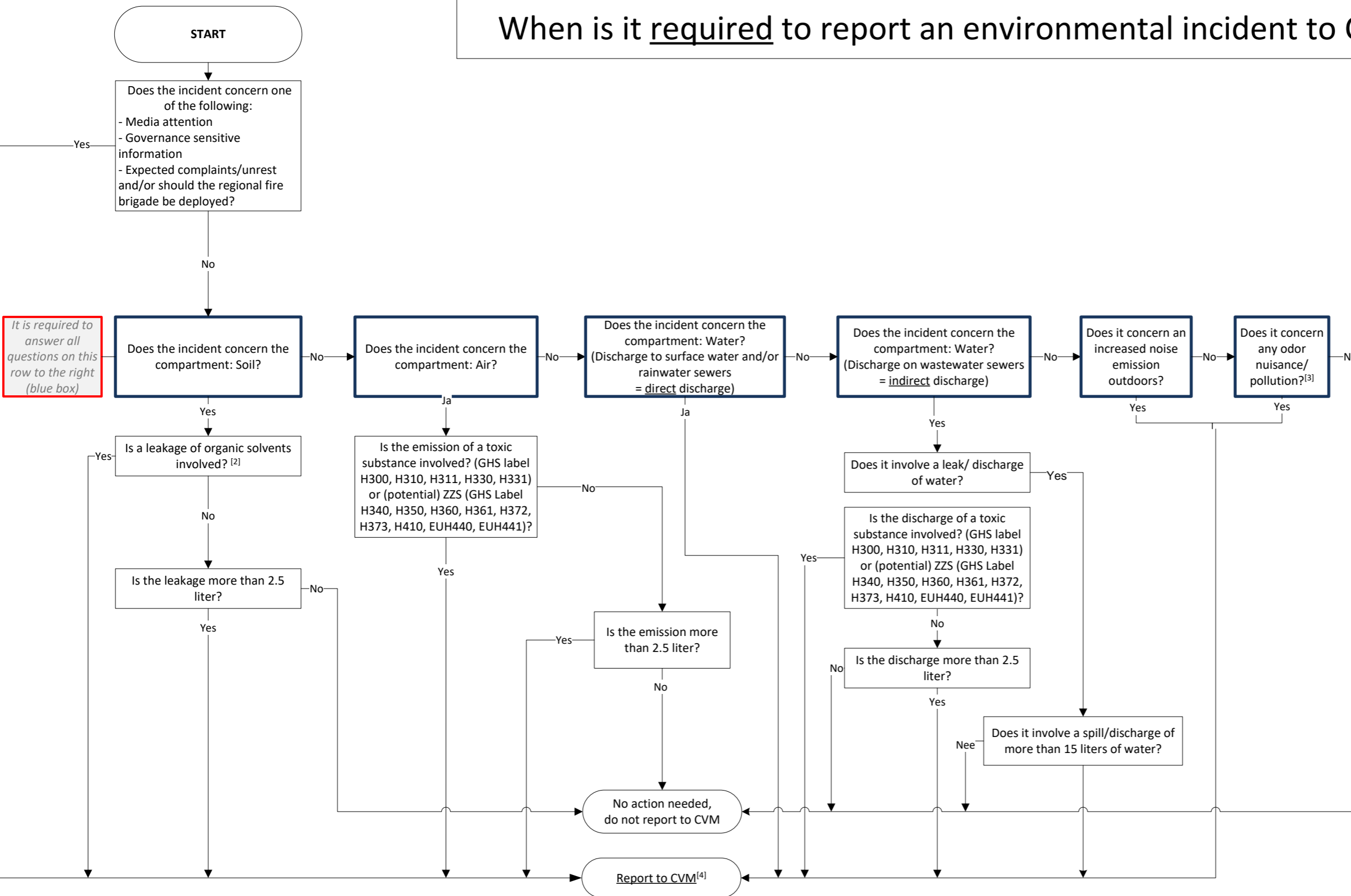


# When is it required to report an environmental incident to CVM?



Coöperatieve Vereeniging Milieu  
High Tech Campus Eindhoven U.A.



It is required to answer all questions on this row to the right (blue box)

- ### Reporting the Environmental Incident
- When emergency services are needed, call first the general emergency number of HTCE: **040-2305444**
  - After taking measures (and optionally warning emergency services) please contact CVM.
  - Depending on the nature of the incident CVM may perform a visual inspection.
  - A report of the unusual occurrence shall subsequently (time is determined by CVM) be sent via email to CVM (cvm@hightechcampus.com) (see footnote 4)

**Footnotes**

**1:** Environmental incident: an event of which (suddenly and unexpectedly) damage, danger or hindrance can occur or threaten to occur to the environment. Think of unwanted emissions or impacts on environmental aspects such as air, odor, (ground)water, noise, soil, external safety.

**2:** Organic solvent: Liquid substance in which a C-H (carbon-hydrogen) compound is present and which is used to dissolve raw materials, products, waste materials or contaminants/impurities.

**3:** Smell/odors that not correspond with the normal operations/activities (chemicals).

**Footnotes**

**4:** Information to report:

- \* Organization
- \* Location of the incident
- \* Description of the incident
  - cause
  - substances
  - quantity
  - compartment
- \* Actions taken
- \* Measures adopted to prevent (re)occurrence of the incident in the future